



## **DEFENSIVE PLAYBOOK**

A complete guide to cutoffs and relays.

Purchase entire booklet at [www.troskyranch.com](http://www.troskyranch.com)

## Base Hit Coverage

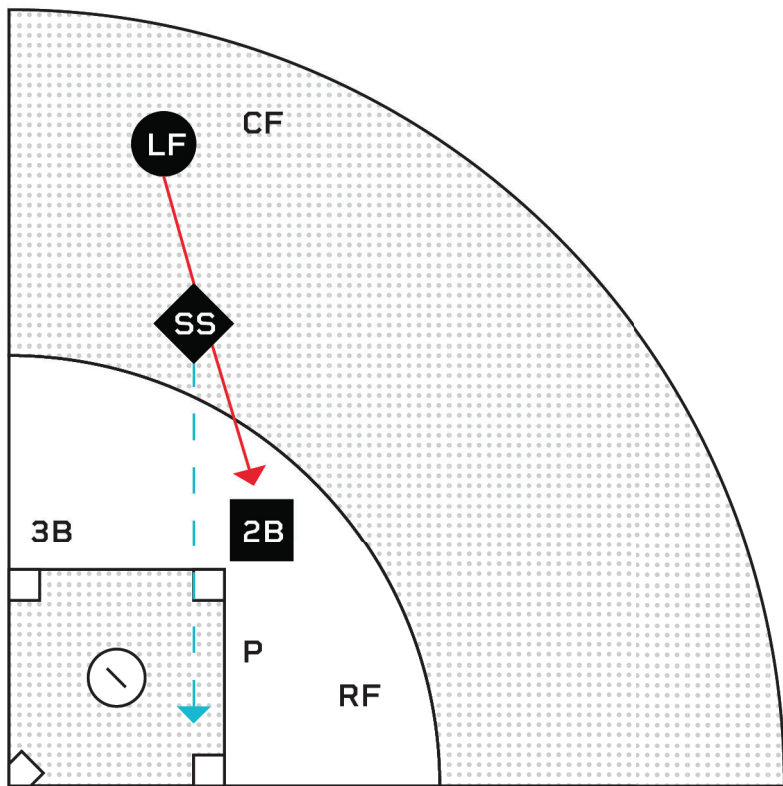
- 3 Bases Empty or Runner on 3B - Single to Left
- 4 Bases Empty or Runner on 3B - Single to Center
- 5 Bases Empty or Runner on 3B - Single to Right
- 6 Runner(s) on 1st, or 1st & 3rd - Single to Left
- 7 Runner(s) on 1st, or 1st & 3rd - Single to Center
- 8 Runner(s) on 1st, or 1st & 3rd - Single to Right
- 9 Runner(s) on 2nd, 1st & 2nd, 2nd & 3rd or Bases Loaded - Single to Left
- 10 Runner(s) on 2nd, 1st & 2nd, 2nd & 3rd or Bases Loaded - Single to Center
- 11 Runner(s) on 2nd, 1st & 2nd, 2nd & 3rd or Bases Loaded - Single to Right

## Extra Base Hit Coverage for Sure Double, Possible Triple

- 12 Bases Empty, R on 2nd, R on 3rd, or Rs on 2nd & 3rd - Left Field Line
- 13 Bases Empty, R on 2nd, R on 3rd, or Rs on 2nd & 3rd - Left-Center Gap
- 14 Bases Empty, R on 2nd, R on 3rd, or Rs on 2nd & 3rd - Right-Center Gap
- 15 Bases Empty, R on 2nd, R on 3rd, or Rs on 2nd & 3rd - Right Field Line
- 16 Runner on 1st, 1st & 2nd, 1st & 3rd or Bases Loaded - Left Field Line
- 17 Runner on 1st, 1st & 2nd, 1st & 3rd or Bases Loaded - Left-Center Gap
- 18 Runner on 1st, 1st & 2nd, 1st & 3rd or Bases Loaded - Right-Center Gap
- 19 Runner on 1st, 1st & 2nd, 1st & 3rd or Bases Loaded - Right Field Line

## Fly Ball - Tagging Up Coverage

- 20 Runners on 2nd or 1st & 2nd - Fly Ball to Left
- 21 Runners on 2nd or 1st & 2nd - Fly Ball to Center
- 22 Runners on 2nd or 1st & 2nd - Fly Ball to Right
- 23 Runners on 3rd, 2nd & 3rd or Bases Loaded - Fly Ball to Left
- 24 Runners on 3rd, 2nd & 3rd or Bases Loaded - Fly Ball to Center
- 25 Runners on 3rd, 2nd & 3rd or Bases Loaded - Fly Ball to Right
- 26 Runners on 1st & 3rd - Fly Ball to Left
- 27 Runners on 1st & 3rd - Fly Ball to Center
- 28 Runners on 1st & 3rd - Fly Ball to Right
- 29 Runners on 1st & 3rd - Pop Up Left Field Line
- 30 Runners on 1st & 3rd - Pop Up Right Field Line
- 31 Runners on 1st & 3rd - Pop Up Behind Home Plate



## OBJECTIVES:

**Primary:** Throw to 2B keeping batter/runner at 1B

**Secondary:** Backdoor batter/runner at 1B

Notes: \_\_\_\_\_  
 \_\_\_\_\_  
 \_\_\_\_\_  
 \_\_\_\_\_  
 \_\_\_\_\_  
 \_\_\_\_\_

● Player Fielding Ball    ◆ Cutoff Man    ■ Lineup/Playman    → Primary Throw    - - - - - → Secondary Throw

## BASE HIT COVERAGE

Bases Empty or Runner on 3B Single to Left

### POSITION COVERAGE

**P:** Backup 2B

**C:** Backup 1B

**1B:** Ensure Runner Touches 1B - Cover 1B for Backdoor

**2B:** Cover 2B

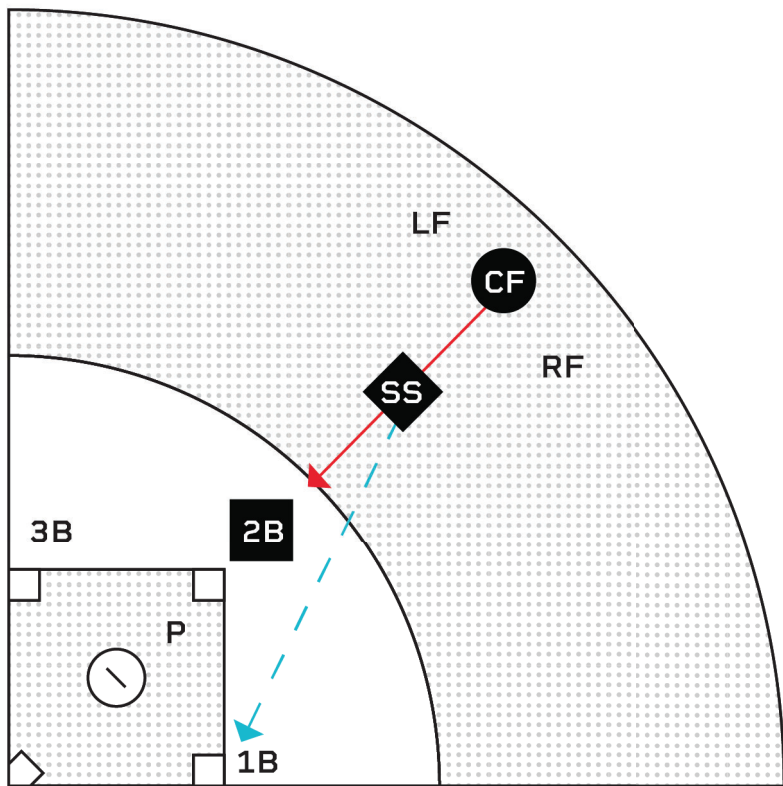
**SS:** Cutoff Man to 2B

**3B:** Cover 3B

**LF:** Field Ball and Hit Cutoff Man (SS)

**CF:** Break Toward LF to Back Up Play

**RF:** Backup 2B



## OBJECTIVES:

**Primary:** Throw to 2B keeping batter/runner at 1B

**Secondary:** Backdoor batter/runner at 1B

(Note: Base hit to right/center 2B becomes cutoff man to 2B & SS covers 2B)

Notes: \_\_\_\_\_  
 \_\_\_\_\_  
 \_\_\_\_\_  
 \_\_\_\_\_  
 \_\_\_\_\_

● Player Fielding Ball    ◆ Cutoff Man    ■ Lineup/Playman    → Primary Throw    → Secondary Throw

## BASE HIT COVERAGE

Bases Empty or Runner on 3B Single to Center

### POSITION COVERAGE

**P:** Backup 2B

**C:** Backup 1B

**1B:** Ensure Runner Touches 1B - Cover 1B for Backdoor

**2B:** Cover 2B

**SS:** Cutoff Man to 2B

**3B:** Cover 3B

**LF:** Backup CF

**CF:** Field Ball and Hit Cutoff Man (SS)

**RF:** Backup CF